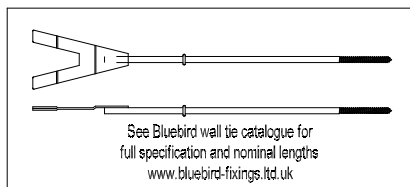


FIXING TIES AT 450mm COURSEWORK

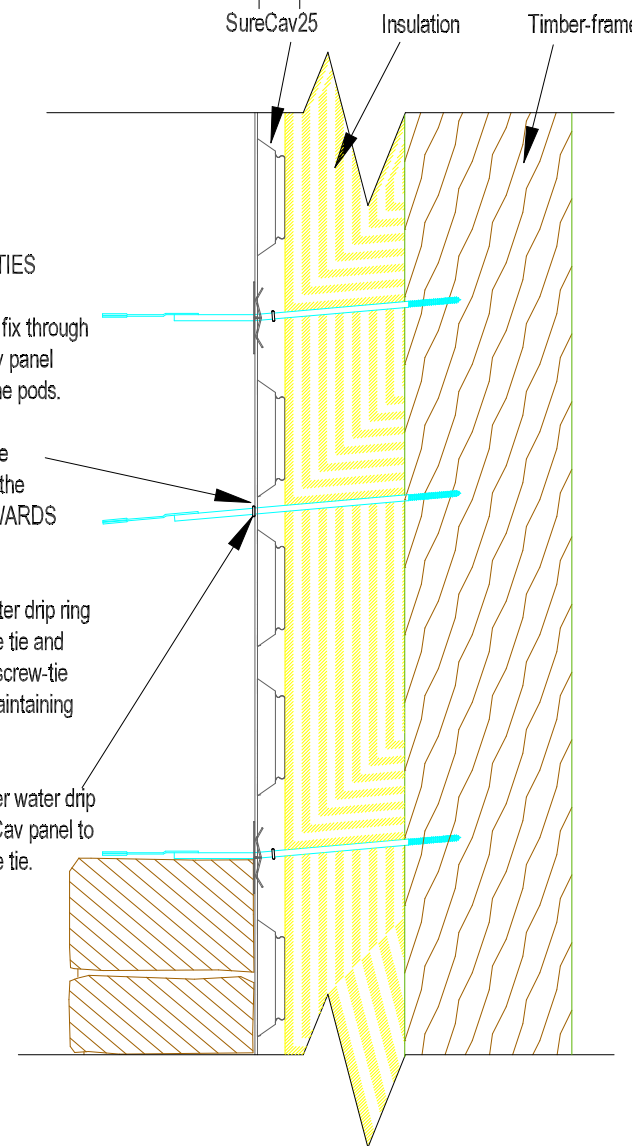
The ties will coincide with the top and bottom edges of the SureCav25 panels.

Screw the Bluebird screw-tie into the wood frame UPWARDS at an angle, ensuring the water drip ring is in the middle of the 25mm air gap.

Trim the joining strip up to the tie and then use the off-cut to continue the join.



See Bluebird wall tie catalogue for full specification and nominal lengths
www.bluebird-fixings.ltd.uk



FIXING RANDOM TIES

IMPORTANT: Only fix through face of the SureCav panel and NOT through the pods.

Drill a clearance hole through the face of the SureCav panel UPWARDS at an angle.

Push the rubber water drip ring onto the shaft of the tie and screw the Bluebird screw-tie into wood frame, maintaining the upward angle.

Now push the rubber water drip ring up to the SureCav panel to help seal around the tie.