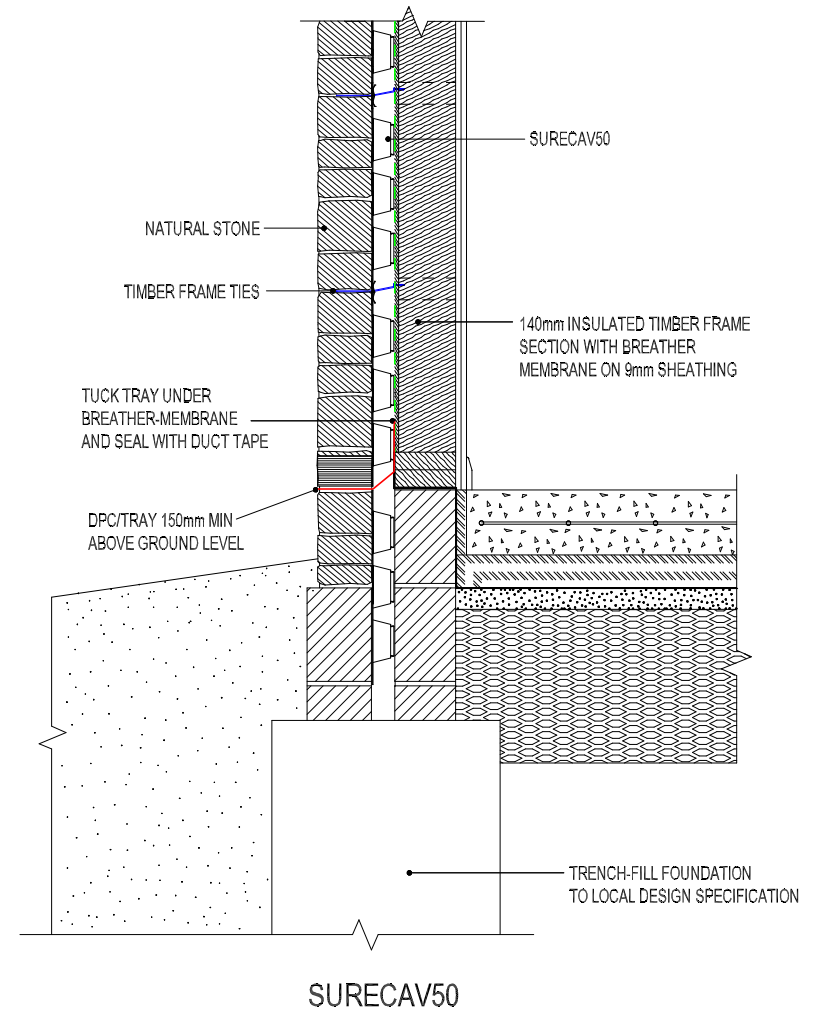


**SURECAV25**



**SURECAV50**

**NOTES**

1. Install an air brick/perp vent over the tray to ensure min.1500mm<sup>2</sup> air flow per linear metre run. This can be achieved by high and low level vents and air/weep vents at lintels.
2. For fixing the SureCav25 panels to the timber-frame ahead of the masons, use special seal washers supplied by SureCav Limited. (5 washers recommended per panel, sold in bags of 50 washers)
3. For installing additional support for the outer leaf masonry, use helical ties through the flat face of the SureCav25 sheet only. Alternatively, frame ties can be fixed through any SureCav25 pod using the special seal washers.
4. The design shown for the internal floor construction is indicative only.



SURECAV25 & SURECAV50

TITLE

TYPICAL TIMBER-FRAME DETAIL WITH SURECAV

DRG NO.

CA-080219-1