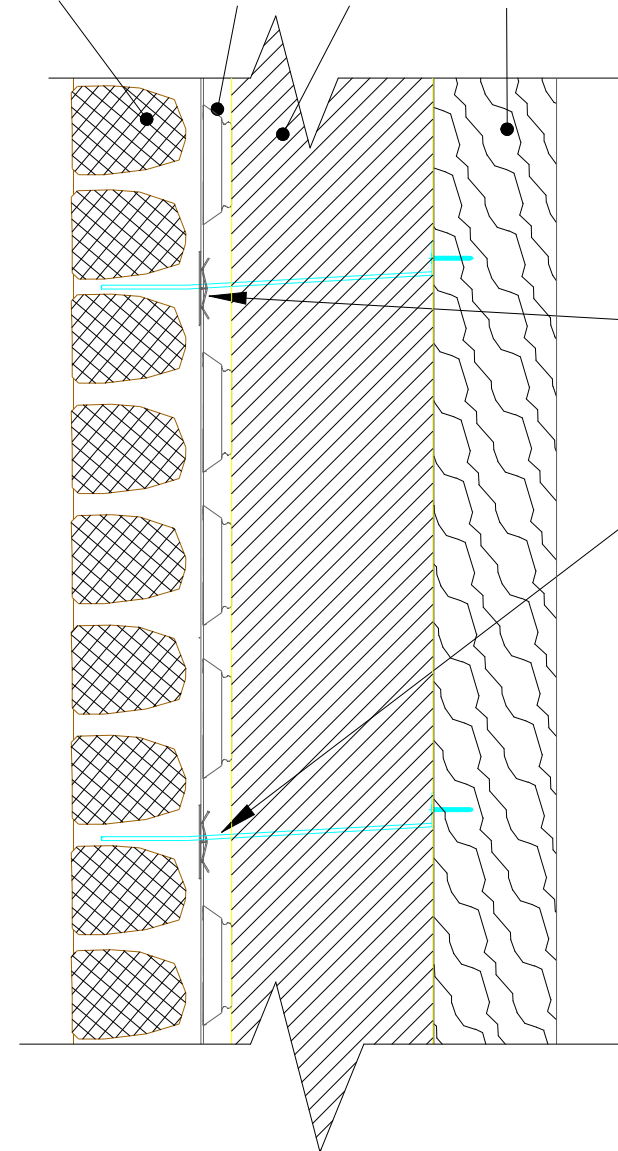


Outer flint leaf    SureCav25    165mm Insulation    100mm Cross Laminated Timber



FIXING TIES AT 450mm COURSEWORK

The ties will coincide with the top and bottom edges of the SureCav25 panels.

Trim the joining strip up to the tie and then use the off-cut to continue the join.

Use helical ties for random fixings, through the flat face of the SureCav25 panel - NOT through the pods

TIMBER-FRAME TIE WITH SURECAV25



TITLE

SURECAV DETAIL TO SHOW ADDITIONAL TEPLO TIE WHEN ADJACENT TO DOOR OR WINDOW OPENING

DRG NO.

CA-070316-1