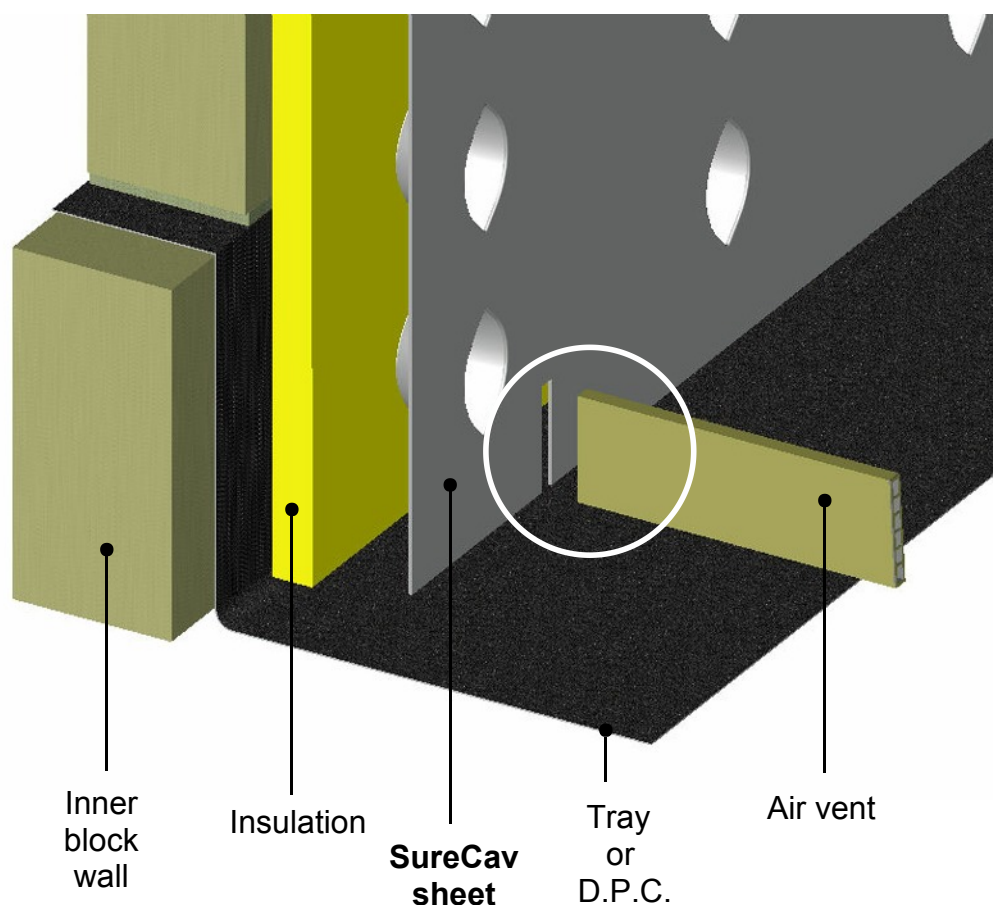


Installing a Cavity Wall Vent In Traditional Construction (If required by local authority)



Cut a slot in the SureCav sheet 10mm wide and 65mm high to match the profile of the ventilator (as shown inside the white circle above). If the intended slot does not coincide with the edge of the SureCav sheet then simply drill a 10mm dia. hole at the top and bottom and cut the material away as shown on the right.



Compliance

The Building (Scotland) Regulations 2004

Vent wall cavities with a masonry outer leaf by installing ventilators with at least 300mm² free opening area at 1.2m maximum centres. (If required)

NHBC Standards

The cavity should be ventilated as detailed above if required by local authority.

SureCav recommends **Cavity Trays** for all your ventilation requirements.

The Type W may be used to provide the balanced air conditions demanded within the cavity in timber-frame construction. <http://www.cavitytrays.co.uk/ventilation/view/2/104/1/type-w>

For more information call us on 01963 34660
Or visit www.surecav.co.uk